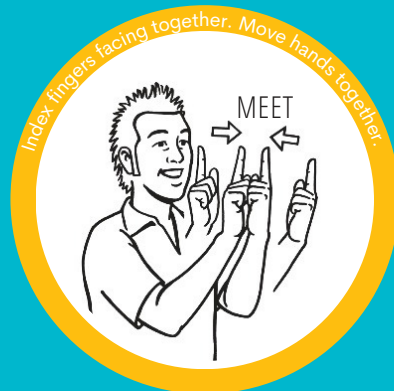
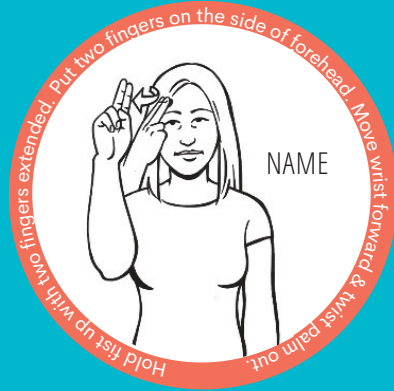


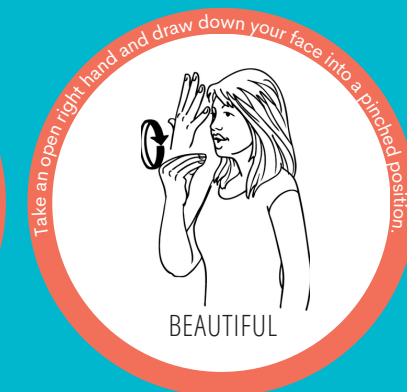
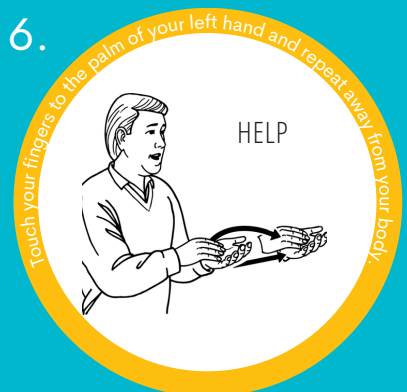
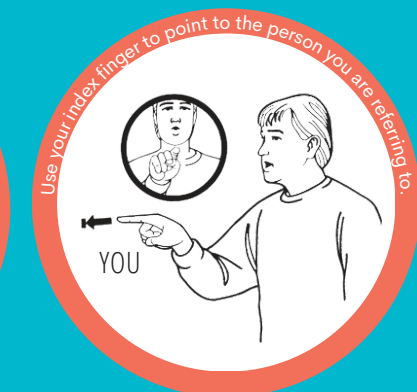
NEW ZEALAND SIGN LANGUAGE AT WORK

Have fun with your colleagues and friends. Learn some basic phrases and help NZSL thrive.

NZSL grammar structure is different to English, remember - it doesn't have to be perfect, just give signing a go!



1. "My name is..." (then finger spell your name!)
2. "Nice to meet you"
3. "How are you?"
4. "Coffee" or asked as a question with eyebrows raised. "Want a coffee?"
5. "I love you"
6. "Want help?"
7. "Awful weather" or "Beautiful weather"



hands up - if you're ready to sign with us!



LEARN MORE AT NZSLWEEK.ORG.NZ

@DEAFAOTEAROA



NZSLWEEK.ORG.NZ